

Report to TRO Panel

# **Peel Street/Garforth Street Junction with Middleton Road and Stockfield Road Junction with Peel Street, Chadderton – Collision Reduction Measures - Objections to Traffic Proposals**

**Portfolio Holder:**

Councillor A Chadderton, Cabinet Member for Neighbourhood Services

**Officer Contact:** Deputy Chief Executive – People and Place

**Report Author:** Alister Storey, Senior Traffic Engineer  
Ext. 5766

**29 July 2021**

**Reason for Decision**

The purpose of this report is to consider objections and representations received to a proposed Traffic Regulation Orders associated with the Peel Street/Garforth Street Junction with Middleton Road and Stockfield Road Junction with Peel Street, Chadderton – Collision Reduction Measures.

**Recommendation**

It is recommended that the TRO's as detailed at the end of this report be approved as advertised.

---

## Peel Street/Garforth Street Junction with Middleton Road and Stockfield Road Junction with Peel Street, Chadderton – Collision Reduction Measures – Objections to Traffic Proposals

### 1 Background

- 1.1 The collision reduction measures supported by the proposed Traffic Regulation Orders relating to the high collision rates at these junctions were approved under delegated powers on 02 April 2020; a copy of the approved report is attached at Appendix A.
- 1.2 The proposal was subsequently advertised in line with current central Government advice during the Covid-19 pandemic. A total of 2 representation have been received, both correspondence received are contained in Appendix B. The objections are summarized in table 1 below:

Table 1 – Summary of objections

Objection	Number of objections	Officers Response
That the extents of new waiting and loading restrictions associated with the prohibition of driving would affect the operations of the a business. Could the restrictions be lessened now that Peel Street at its junction with Middleton Road is effectively “stopped up”. If the existing restrictions were retained at this location this would still permit waiting and loading outside of peak hours.	1	Agreed – the existing restrictions adjacent to a business on the West side of Peel Street are revoked and the Proposed TRO Schedules and drawings are amended accordingly.
A business situated on Watts Street feels that the prohibition of motor vehicles on Peel Street from its junction with Middleton Road would impact the ability of passing trade to find his business. The objector suggests that rather than prohibiting motor vehicles on Peel St, that this restriction should be applied to the junction of Garforth Street.	1	It is appreciated that the prohibition of motor vehicles will change current traffic patterns, however road safety concerns must take priority. The junction concerned has the highest rates of personal injury collisions in the Oldham. Other options were considered at the junction, but the only feasible option is a prohibition of motor vehicles with the introduction of physical measures to ensure the TRO is complied with.

### 2 Justification

- 2.1 In view of the high rate of personal injury collisions at the junction of Middleton Road with Garforth Street and Peel Street, it is felt that the mitigation measures planned outweigh the objections received to the proposals.

### 3 Options/Alternatives

- 3.1 Option 1 – Not to uphold the Objections to the proposals and to approve the Traffic Regulation Order as Advertised.
- 3.2 Option 2 – To uphold the Objections to the proposals and rescind the proposals.
- 3.3 Option 3 – To partially uphold the Objections to the proposals and to approve amendments to the proposals.

---

#### 4 **Preferred Option**

4.1 The preferred option is Option 3. The deletion of the proposed restrictions and the removal of the current restriction on the West side of Peel Street will not impact on the safety of the proposed scheme.

#### 5 **Comments of Chadderton Central / Chadderton North / Coldhurst Ward Councillors**

5.1 The Ward Councillors have been consulted again and Councillor G Shuttleworth has no comment other than to support highway improvements designed to make travel safer for residents, be whichever means they do so. Councillor B Brownridge supports the proposal.

5.2 The Chadderton Central Ward Councillors have the following comments: The Ward Councillors are happy to support the proposals and recognise that this location is a danger to pedestrians and motorists alike. Fortunately, the impact on local bus services appears to be minimal and can be re-routed. This proposal to modify the junction at Peel Street and Middleton Road has been under consideration for several years. The anticipated measures will help this to become a much safer location.

#### 6 **Financial Implications**

6.1 These were dealt with in the previous report.

#### 7 **Legal Services Comments**

7.1 These were dealt with in the previous report.

#### 8 **Co-operative Agenda**

8.1 In respect of the Traffic management proposed there are no Co-operative issues or opportunities arising and the proposals are in line with the Council's Ethical Framework.

#### 9 **Human Resources Comments**

9.1 None.

#### 10 **Risk Assessments**

10.1 None

#### 11 **IT Implications**

11.1 None.

#### 12 **Property Implications**

12.1 None.

#### 13 **Procurement Implications**

13.1 None.

---

14 **Environmental and Health & Safety Implications**

14.1 These were dealt with in the previous report.

15 **Equality, community cohesion and crime implications**

15.1 These were dealt with in the previous report

16 **Equality Impact Assessment Completed?**

16.1 No

17 **Key Decision**

17.1 No.

18 **Key Decision Reference**

18.1 Not applicable.

19 **Background Papers**

19.1 The following is a list of background papers on which this report is based in accordance with the requirements of Section 100(1) of the Local Government Act 1972. It does not include documents which would disclose exempt or confidential information as defined by the Act :

None.

20 **Appendices**

20.1 Appendix A Copy of Delegated Report  
Appendix B Copy of Objections

21 **Proposal**

21.1 It is proposed that Traffic Regulation Order(s) covering the Prohibition of Driving, Waiting, Parking and Loading Peel Street, Watts Street and Stockfield Road be introduced in accordance with the following schedule:

Schedule  
Drawing Number 2376/A4/263/12

Prohibition of Driving

Road	Description
Peel Street, Chadderton	From its junction with the A669 Middleton Road in a primarily south western direction for a distance of 5 metres

Schedule  
Drawing Number 2376/A3/263/11

Delete from the Oldham Borough Council (Oldham area) Consolidation Order 2003  
Part I Schedule I

Column 1	Column 2	Column 3	Column 4	Column 5
	Length of Road	Duration	Exemptions	No Loading
(CH105)	<u>Peel Street</u> (Both sides)  From its junction with Middleton Road to its junction with Watts Street	At Any Time	A, B1, B3, B4, C, E, J, K4	7.30am - 9.30am & 4pm - 6.30pm Mon to Fri
(CH34)	<u>Peel Street</u> (Both sides)  From its junction with Stock Lane to its junction with Watts Lane	7am – 7 pm	A, B1, B2, B3, B4, C, J	

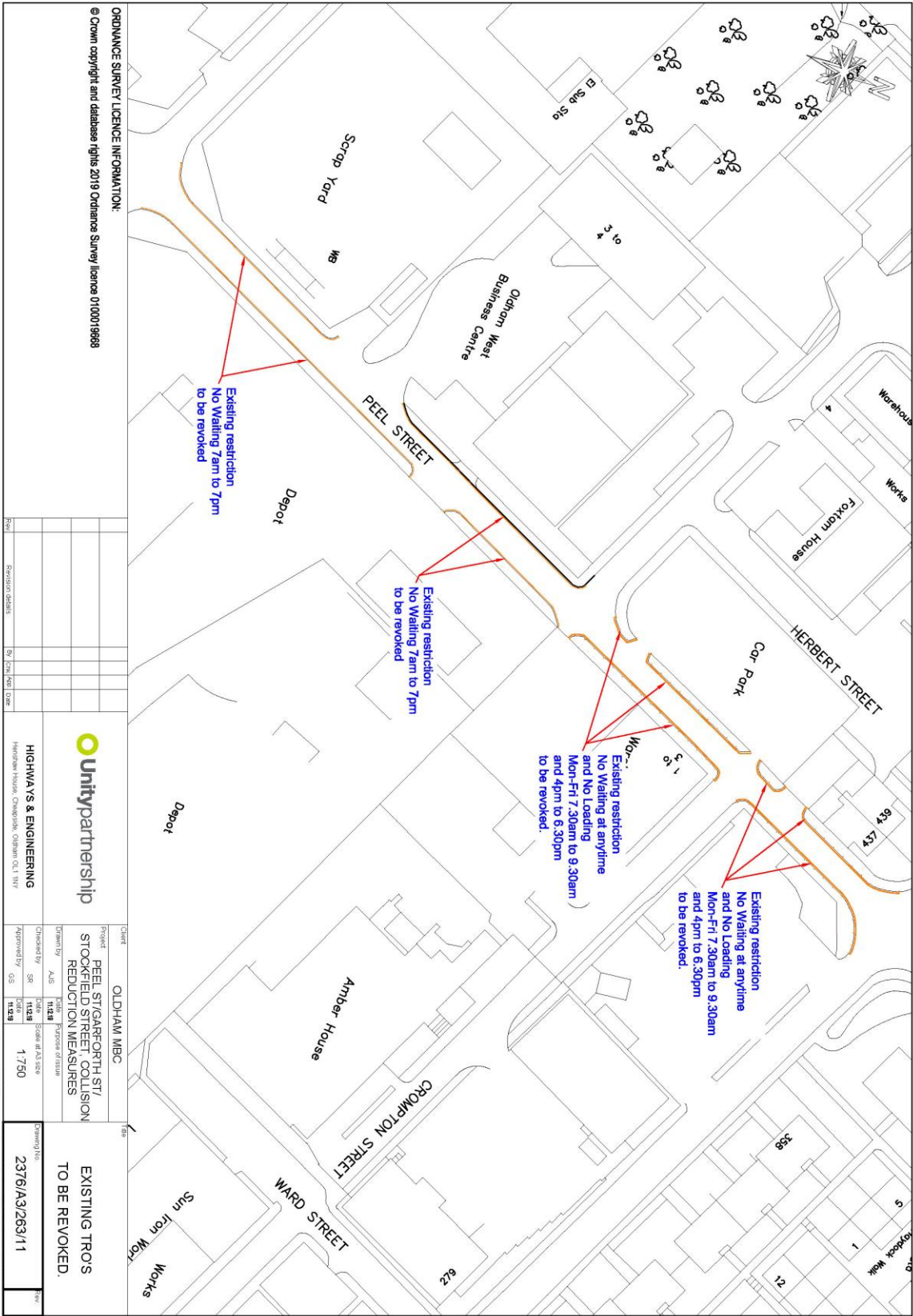
Schedule  
Drawing Number 2376/A3/263/12

Add to the Oldham Borough Council (Oldham area) Consolidation Order 2003  
Part I Schedule I

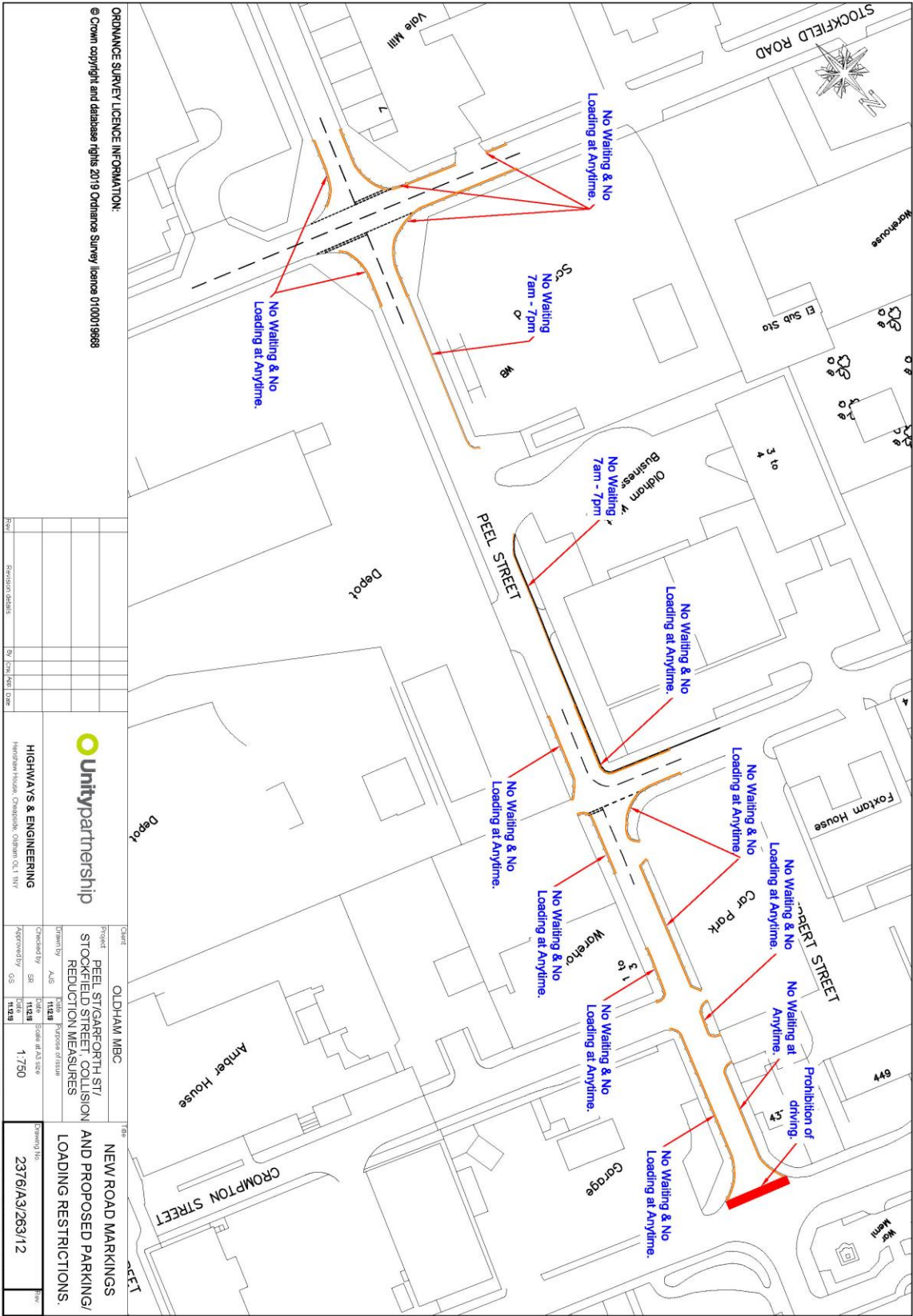
Column 1	Column 2	Column 3	Column 4	Column 5
Item No	Length of Road	Duration	Exemptions	No Loading
	<u>Peel Street</u> (West side)  From its junction with Middleton Road to a point 15 metres south of its junction with Watts Street	At Any Time	A, B1, B3, B4, C, E, J, K4	

	<p><u>Peel Street</u> (West side)</p> <p>From a point 28.5 metres south of its junction with Middleton Road to a point 15 metres south of its junction with Watts Street</p>			At Any Time
	<p><u>Peel Street</u> (East side)</p> <p>From its junction with Middleton Road to a point 15 metres south of its junction with Crompton Street</p>	At Any Time	A, B1, B3, B4, C, E, J, K4	At Any Time
	<p><u>Peel Street</u> (East side)</p> <p>From a point 15 metres north of its junction with Watts Street to a point 15 metres south of its junction with Watts Street</p>	At Any Time	A, B1, B3, B4, C, E, J, K4	At Any Time
	<p><u>Peel Street</u> (Both sides)</p> <p>From a point 15 metres north for its junction with Stockfield Road to a point 15 metres south of its junction of Stockfield Road</p>	At Any Time	A, B1, B3, B4, C, E, J, K4	At Any Time

	<p><u>Peel Street</u> (West Side)</p> <p>From a point 15 metres south of its junction with Watts Street to a point 15 metres north of its junction with Stockfield Road</p>	7am to 7pm	A, B1, B2, B3, B4, C, J	
	<p><u>Watts Street</u> (Both sides)</p> <p>From its junction with Peel Street for a distance of 15 metres in a westerly direction</p>	At Any Time	A, B1, B2, B3, B4, C, J	At Any Time
	<p><u>Stockfield Road</u> (Both sides)</p> <p>From its junction with Peel Street in a westerly direction for a distance of 32 metres</p>	At Any Time	A, B1, B3, B4, C, E, J, K4	At Any Time







ORDNANCE SURVEY LICENSE INFORMATION:  
 © Crown copyright and database rights 2019 Ordnance Survey licence 0100019888

Rev	Revision details	By	Date

**Unitypartnership**  
 HIGHWAYS & ENGINEERING  
 Handsworth House, Chislehurst, Oldham, OL1 1NY

Client	OLDHAM MBC	Project	PELE STREET/STOCKFIELD STREET COLLISION REDUCTION MEASURES
Drawn by	SR	Checked by	SR
Scale	1:750	Drawn on	2376/A3/263/12
Drawn date	11/18	Checked date	11/18
Drawn by	SR	Checked by	SR
Drawn date	11/18	Checked date	11/18
Drawn by	SR	Checked by	SR
Drawn date	11/18	Checked date	11/18

Drawn by: SR  
 Checked by: SR  
 Scale: 1:750  
 Drawn on: 2376/A3/263/12  
 Drawn date: 11/18  
 Checked date: 11/18  
 Drawn by: SR  
 Checked by: SR  
 Scale: 1:750  
 Drawn on: 2376/A3/263/12  
 Drawn date: 11/18  
 Checked date: 11/18  
 Drawn by: SR  
 Checked by: SR  
 Scale: 1:750  
 Drawn on: 2376/A3/263/12  
 Drawn date: 11/18  
 Checked date: 11/18

---

**APPENDIX A**  
**COPY OF MODGOV REPORT**

## **Delegated Decision**

# **Peel Street/Garforth Street Junction with Middleton Road and Stockfield Road Junction with Peel Street, Chadderton – Collision Reduction Measures**

Report of: Deputy Chief Executive – People and Place

Officer contact: Alister Storey, Traffic Engineer  
Ext. 5766

**1 April 2020**

### **Purpose of Report**

The purpose of this report is to consider introducing various traffic management measures in order to reduce the number of personal injury collisions at the junctions of Peel Street/Garforth Street with Middleton Road and Stockfield Road with Peel Street.

### **Recommendation**

It is proposed that the traffic management measures and restrictions proposed in this report are introduced, in accordance with the drawings and schedule included at the end of this report.

---

## **Peel Street/Garforth Street Junction with Middleton Road and Stockfield Road Junction with Peel Street, Chadderton – Collision Reduction Measures**

### **1 Background**

#### **Peel Street/Garforth Street Junction with Middleton Road**

- 1.1 The junction of Peel Street/Garforth Street junction with Middleton Road is an uncontrolled crossroads with Middleton Road having priority. Both the side roads Peel Street and Garforth Street are marked and signed with “Give way”.
- 1.2 The section of Middleton Road where the junction concerned is located runs from the A663 Broadway and A627 Oldham Way. The route is fronted by a mixture of commercial and residential properties. The route is the main route between Middleton and Oldham Town Centre. Garforth Street is an unclassified local distributor route for residential areas that is fronted by primarily residential properties. Peel Street is an unclassified local distributor route that services commercial and industrial areas. All three roads are serviced by scheduled bus routes.
- 1.3 All three routes are subject to street lighting and have footway to both sides. Middleton Road and Peel Street have a 30mph speed limit, Garforth Street is traffic calmed and is subject to a 20mph speed limit. Middleton Road is covered by a no waiting at any time and peak time loading restriction, Peel Street and Garforth Street both subject to no waiting at any time restrictions.
- 1.4 The next junction in an easterly direction on Middleton Road is with Lansdowne Road. This junction has recently been subject to a major improvement scheme where the junction was fully signalised.

#### **Peel Street Junction with Stockfield Road**

- 1.5 Both Peel Street and Stockfield Road are unclassified local distributor routes that service industrial and commercial areas, both are fronted by commercial and industrial properties. The junction of the two routes is an uncontrolled crossroads with Peel Street having priority. Both roads are lit, subject to a 30mph speed limit and have footway to both sides. A “no waiting at any time” restriction has recently been implemented on Stockfield Road westbound approach to the junction to combat obstructive parking. There are bus stops either way on Peel Street to the south of the junction.

## 2 Collision Data

### Peel Street/Garforth Street Junction with Middleton Road

- 2.1 Collision data for the last three years to March 2019 identifies 7 personal injury collisions at the junction of Middleton Road with Peel Street/Garforth Street resulting in 2 serious injuries and 10 slight injuries. The breakdown of the collision data is shown below:

Year	Collisions			
	Fatal	Serious	Slight	Total
2016	0	1	1	2
2017	0	1	2	3
2018	0	0	2	2
Total	0	2	5	7

Year	Casualties			
	Fatal	Serious	Slight	Total
2016	0	1	4	5
2017	0	1	3	4
2018	0	0	2	2
Total	0	2	9	11

- 2.2 Analysis of the available collision data shows;

- 4 out of the 7 recorded collisions were in dark conditions and 4 were in wet conditions, 2 collision was in a combination of wet and dark conditions;
- 1 of the recorded collisions involved pedal cycle and 1 involved a motorcycle, both of these collisions resulted in 1 serious injury;
- All of the recorded collisions involved vehicles emerging from side roads, 4 of these collisions involved vehicles emerging from Garforth Street heading across Middleton Road to Peel Street;
- The top three contributory factors attributed to the collisions were:
- Failure to judge others path/speed;
- Failure to look properly; and
- Poor turn/manoeuvre.

- 2.3 It is evident from collision data analysis that there is a road safety problem with drivers negotiating the crossroad junction when approaching from the side roads, Peel Street and Garforth Street. The majority of collisions have occurred where vehicles on the Garforth Street approach have either overshoot the junction or have failed to obey the "Give way" signs and markings. Observations taken on site have shown no particular problems with the geometric layout of the junction or any issues with existing signing or lining.

## Peel Street Junction with Stockfield Road

- 2.4 Collision data for the last three years to March 2019 identifies 7 personal injury collisions at the junction of Peel Street and Stockfield Road resulting in 7 slight injuries. The breakdown of the collision data is shown below:

Year	Collisions			
	Fatal	Serious	Slight	Total
2016	0	0	1	1
2017	0	0	4	4
2018	0	0	2	2
Total	0	0	7	7

Year	Casualties			
	Fatal	Serious	Slight	Total
2016	0	0	1	2
2017	0	0	4	4
2018	0	0	2	2
Total	0	0	7	7

- 2.5 Analysis of the available collision data shows;

- 1 out of the 7 recorded collisions were in dark conditions and 2 were in wet conditions;
- 1 of the recorded collisions involved a pedestrian, 1 involved a pedal cycle and 1 collision involved a motorcycle, each of these collisions resulted in 1 slight injury.
- 5 of the recorded collisions involved vehicles failing to give way when travelling along Stockfield Road.
- The top three contributory factors attributed to the collisions were:
  - Failure to look properly;
  - Failure to judge others path/speed; and
  - Disobeyed sign or road marking.

- 2.6 From collision analysis it is evident that there is a problem with drivers negotiating this uncontrolled crossroad.

## 3 Proposals

### Peel Street/Garforth Street Junction with Middleton Road

- 3.1 Due to the high number of collisions involving vehicles crossing from Garforth Street to Peel Street, it is considered that a Prohibition of Driving Order is introduced on Peel Street at its junction with Middleton Road. The alternative route for vehicle will be via Middleton Road, Lansdowne Road, Stockfield Road and vice versa. The junction improvement at Lansdowne Road junction and the



---

newly introduced waiting restrictions on Stockfield Road will aid in the free flow of the rerouted vehicles.

Due to the reduced flow of traffic on Peel Street, it is also proposed to change the priority at the junction of Peel Street with Watts Street, with Watts Street to Peel Street south bound being given priority. It is also proposed to change the priority at the junction of Peel Street with Stockfield Road with Stockfield Road being given priority.

Waiting restrictions are also proposed at various locations, to protect the junctions where priorities are altered. It is also proposed to remove existing restrictions at two location, where they will no longer be required.

It is further proposed to introduce a mini roundabout at the junction of Watts Street with Melbourne Street, this is to aid the traffic flow should drivers heading from Middleton direction use this route instead of the Lansdowne Road route.

#### **4 Options/Alternatives**

4.1 Option 1: To approve the recommendation

4.2 Option 2: Not to approve the recommendation

#### **5 Preferred Option**

5.1 The preferred option is Option 1

#### **6 Justification**

6.1 In view of the of the number of personal injury collisions recorded at the junctions of Garforth Street/Peel Street with Middleton Road and Peel Street with Stockfield Road, it is felt that the restrictions specified in the schedule at the end of this report and on drawing numbers 47/A3/263/2 to 47/A3/263/10, 47/A3/263/12 & 47/A3/263/12 and 47/A4/263/13.

#### **7 Consultations**

7.1 G.M.P. View - The Chief Constable has been consulted and has no comment on this proposal.

7.2 T.f.G.M. View - The Director General has been consulted and has no objection to this proposal.

7.3 G.M. Fire Service View - The County Fire Officer has been consulted and has no comment on this proposal.

7.4 N.W. Ambulance Service View - The County Ambulance Officer has been consulted and has no comment on this proposal.

---

8 **Comments of Chadderton Central / Chadderton South / Coldhurst Ward Councillors**

8.1 The Ward Councillors have been consulted and are happy to support the proposal. It is to be hoped that reconfiguration of the junction at Middleton Road will help to achieve a significant reduction in the accident rate at the junction of Peel Street/Middleton Road and Peel Street/Stockfield Road.

9 **Financial Implications**

9.1 The cost of introducing the Order is shown below:-

	Cost (£'000)
Advertisement of Order (revenue)	1
Supply & install of physical Prohibition of Driving	7
Supply & install of bollards at Prohibition of Driving	4
Introduction of signs including electrical works	18
Introduction of Road Markings	1
Design and Supervision fees	10
Contingencies (10%)	4
<b>Total Cost outlay</b>	<b>45</b>

9.2 The cost of introducing traffic measures at the junction of Peel Street / Garforth Street will be circa £44K and will be Capital Expenditure. This will be funded from the relevant scheme within the Transport Capital Programme.

9.3 The advertisement costs of £1.2k and the annual maintenance costs of £700 will be funded through the annual revenue Highways Maintenance budget.

(John Edisbury)

10 **Legal Services Comments**

10.1 The Council must be satisfied that it is expedient to make the Traffic Regulation Order in order to avoid danger to persons or other traffic using the road or any other road or for preventing the likelihood of any such danger arising, or for preventing damage to the road or to any building on or near the road, or for facilitating the passage on the road or any other road of any class of traffic, including pedestrians, or for preventing the use of the road by vehicular traffic of a kind which, or its use by vehicular traffic in a manner which, is unsuitable having regard to the existing character of the road or adjoining property or for preserving or improving the amenities of the area through which the road runs.

10.2 In addition to the above, under section 122 of the Road Traffic Regulation Act 1984, it shall be the duty of the Council so to exercise the functions conferred on them by the Act as to secure the expeditious, convenient and safe movement of vehicular and other traffic (including pedestrians) and the provision of suitable and adequate parking facilities on and off the highway. Regard must also be had to the desirability of securing and maintaining



---

reasonable access to premises, the effect on the amenities of any locality affected and the importance of regulating and restricting the use of roads by heavy commercial vehicles so as to preserve or improve the amenities of the areas through which the roads run, the strategy produced under section 80 Environmental Protection Act 1990 (the national air quality strategy), the importance of facilitating the passage of public service vehicles and of securing the safety and convenience of persons using or desiring to use such vehicles and any other matters appearing to the Council to be relevant. (A Evans)

**11 Co-operative Agenda**

11.1 In respect of this proposal there are no Co-operative issues or opportunities arising and the proposals are in line with the Council's Ethical Framework

**12 Human Resources Comments**

12.1 None.

**13 Risk Assessments**

13.1 None.

**14 IT Implications**

14.1 None.

**15 Property Implications**

15.1 None.

**16 Procurement Implications**

16.1 None.

**17 Environmental and Health & Safety Implications**

17.1 Energy – Nil.

17.2 Transport – The rerouting of 3 scheduled bus services will be required due to the prohibition of driving on Peel Street. Previous highway improvements in the area should ensure that rerouting of the services will have minimum impact. The change in bus route will not impact on any existing bus stops.

17.3 Pollution – Nil.

17.4 Consumption and Use of Resources – Nil.

17.5 Built Environment – Minor alteration to the visual appearance of the area.

17.6 Natural Environment – Nil.

---

17.7 Health and Safety – Nil.

18 **Equality, community cohesion and crime implications**

18.1 None.

19 **Equality Impact Assessment Completed?**

19.1 No.

20 **Key Decision**

20.1 No.

21 **Key Decision Reference**

21.1 Not applicable.

22 **Background Papers**

22.1 The following is a list of background papers on which this report is based in accordance with the requirements of Section 100(1) of the Local Government Act 1972. It does not include documents which would disclose exempt or confidential information as defined by the Act:

None.

23 **Appendices**

23.1 Appendix 1 – Collision data and plan

24 **Proposal**

24.1 It is proposed that Traffic Regulation Order(s) covering the Prohibition of Driving, Waiting, Parking and Loading Peel Street, Watts Street and Stockfield Road be introduced in accordance with the following schedule:

Schedule  
Drawing Number 2376/A4/263/13

Prohibition of Driving

Road	Description
Peel Street, Chadderton	From its junction with the A669 Middleton Road in a primarily south western direction for a distance of 5 metres

Schedule  
Drawing Number 2376/A3/263/11

Delete from the Oldham Borough Council (Oldham area) Consolidation Order 2003  
Part I Schedule I

Column 1	Column 2	Column 3	Column 4	Column 5
	Length of Road	Duration	Exemptions	No Loading
(CH105)	<u>Peel Street</u> (Both sides)  From its junction with Middleton Road to its junction with Watts Street	At Any Time	A, B1, B3, B4, C, E, J, K4	7.30am - 9.30am & 4pm - 6.30pm Mon to Fri
(CH34)	<u>Peel Street</u> (Both sides)  From its junction with Stock Lane to its junction with Watts Lane	7am – 7 pm	A, B1, B2, B3, B4, C, J	

Schedule  
Drawing Number 2376/A3/263/12


Add to the Oldham Borough Council (Oldham area) Consolidation Order 2003  
Part I Schedule I

Column 1	Column 2	Column 3	Column 4	Column 5
Item No	Length of Road	Duration	Exemptions	No Loading
	<u>Peel Street</u> (West side)  From its junction with Middleton Road to a point 15 metres south of its junction with Watts Street	At Any Time	A, B1, B3, B4, C, E, J, K4	

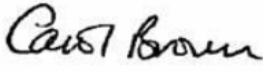
	<p><u>Peel Street</u> (West side)</p> <p>From a point 28.5 metres south of its junction with Middleton Road to a point 15 metres south of its junction with Watts Street</p>			At Any Time
	<p><u>Peel Street</u> (East side)</p> <p>From its junction with Middleton Road to a point 15 metres south of its junction with Crompton Street</p>	At Any Time	A, B1, B3, B4, C, E, J, K4	At Any Time
	<p><u>Peel Street</u> (East side)</p> <p>From a point 15 metres north of its junction with Watts Street to a point 15 metres south of its junction with Watts Street</p>	At Any Time	A, B1, B3, B4, C, E, J, K4	At Any Time
	<p><u>Peel Street</u> (Both sides)</p> <p>From a point 15 metres north for its junction with Stockfield Road to a point 15 metres south of its junction of Stockfield Road</p>	At Any Time	A, B1, B3, B4, C, E, J, K4	At Any Time

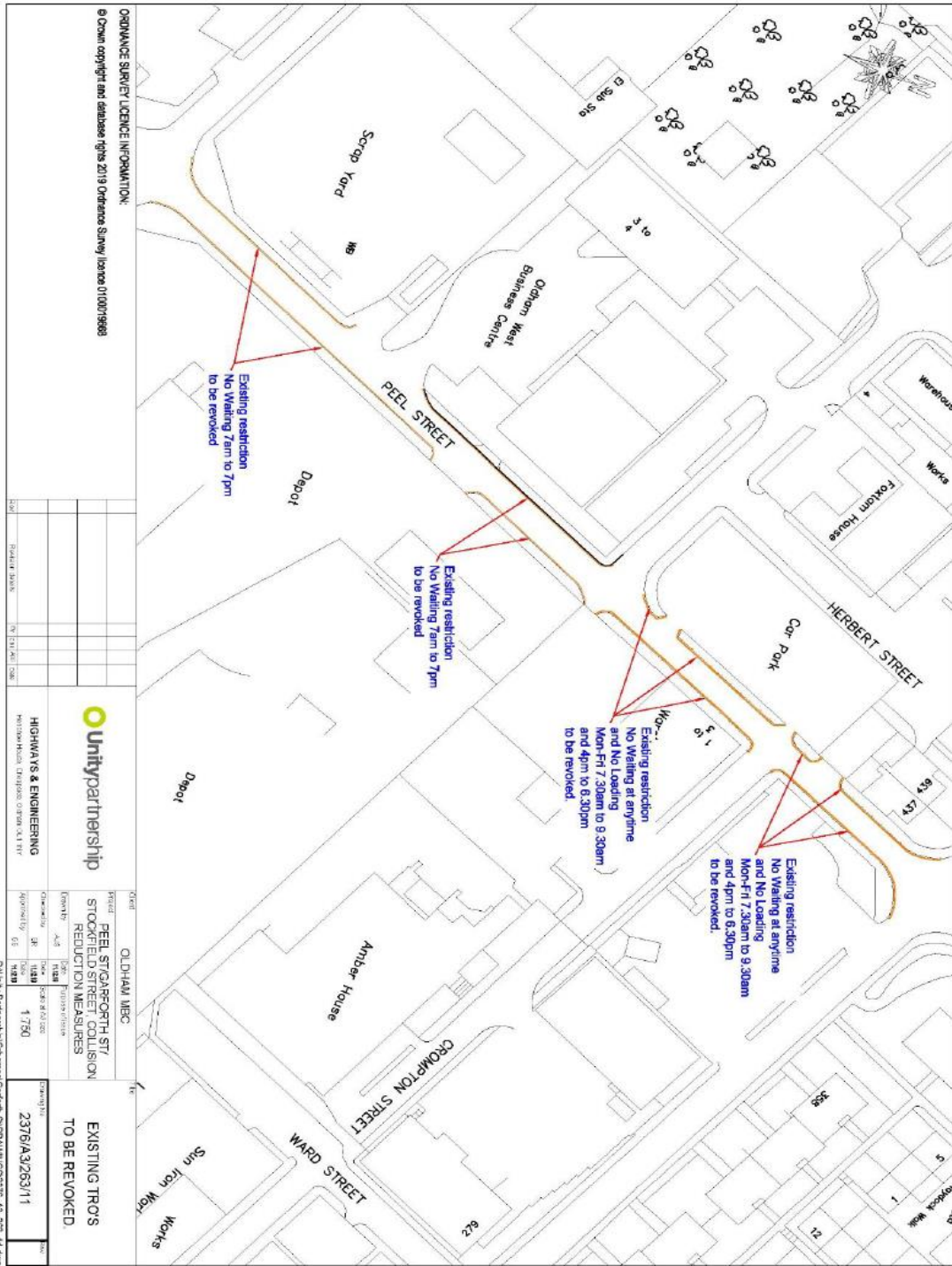
	<u>Peel Street</u> (West Side)  From a point 15 metres south of its junction with Watts Street to a point 15 metres north of its junction with Stockfield Road	7am to 7pm	A, B1, B2, B3, B4, C, J	
	<u>Watts Street</u> (Both sides)  From its junction with Peel Street for a distance of 15 metres in a westerly direction	At Any Time	A, B1, B2, B3, B4, C, J	At Any Time
	<u>Stockfield Road</u> (Both sides)  From its junction with Peel Street in a westerly direction for a distance of 32 metres	At Any Time	A, B1, B3, B4, C, E, J, K4	At Any Time

**APPROVAL**

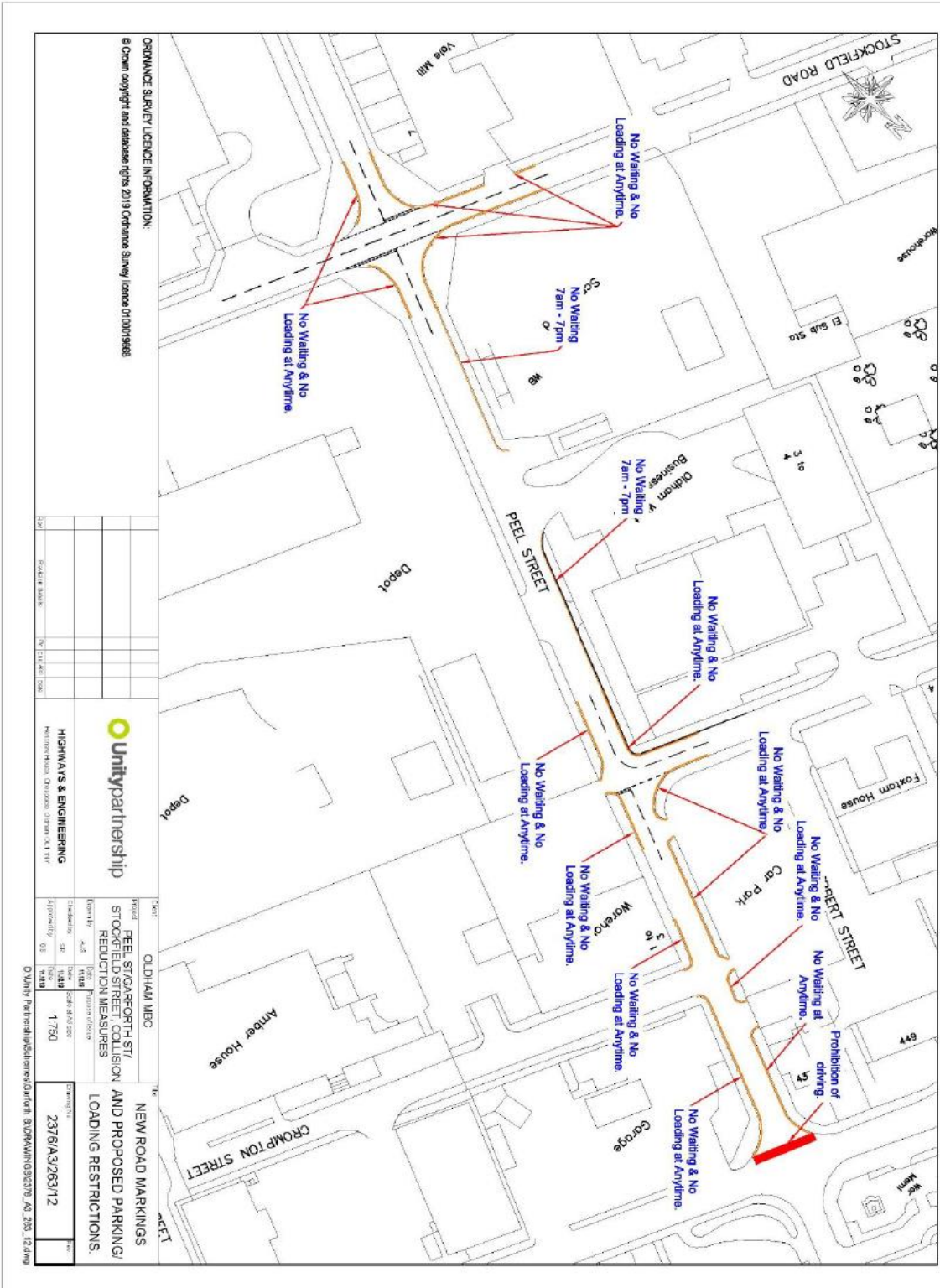
<b>Decision maker</b> Signed    Cabinet Member, Environmental Services	Dated 03/04/2020
<b>In consultation with</b>	

---

Signed  Director of Environmental Services	Dated 2 April 2020
---	--------------------







ORDNANCE SURVEY LICENCE INFORMATION:  
 © Crown copyright and database rights 2019 Ordnance Survey Licence 0100019988

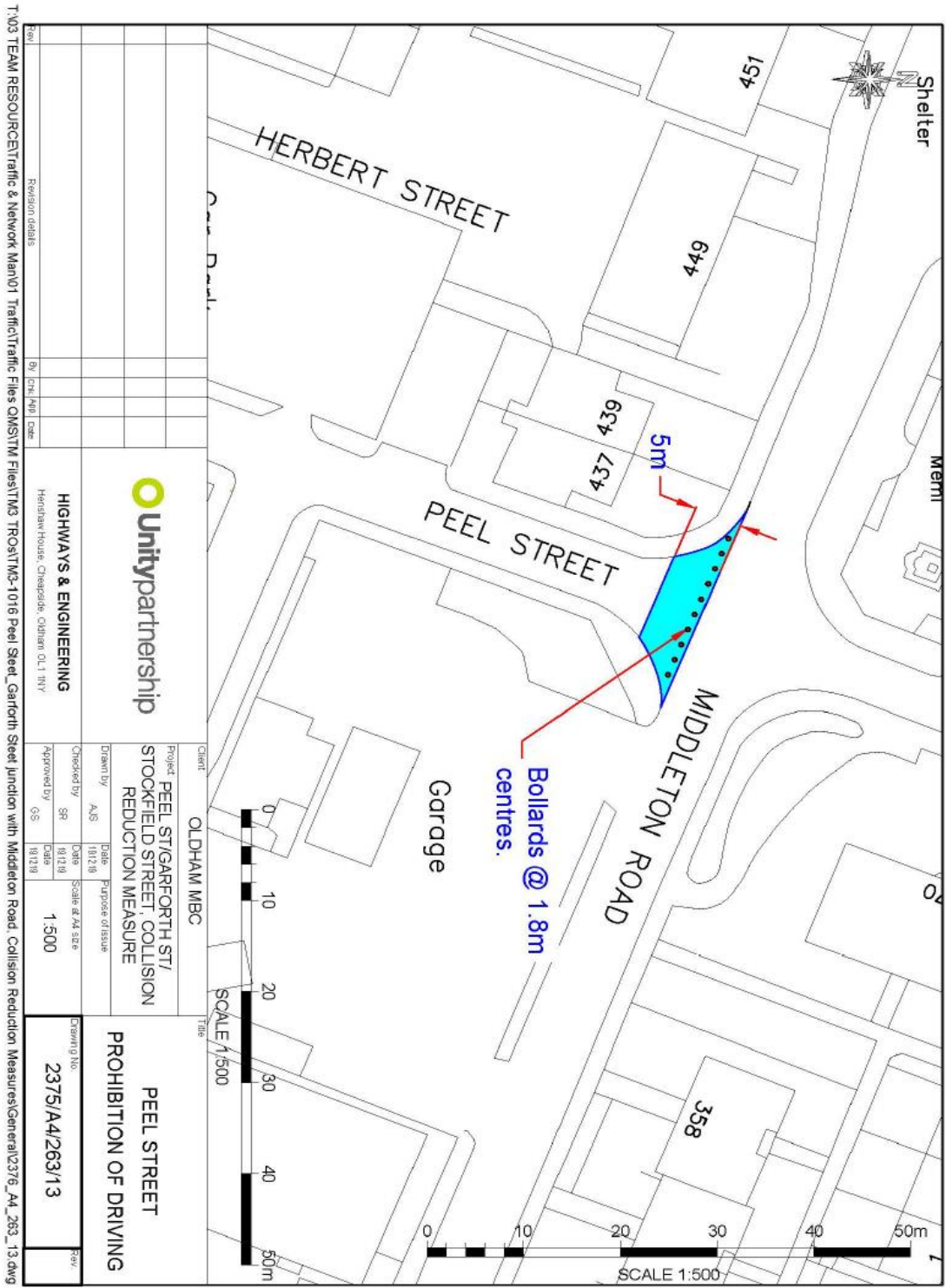
NO.	ROAD NAME	PEL PLAN NO.

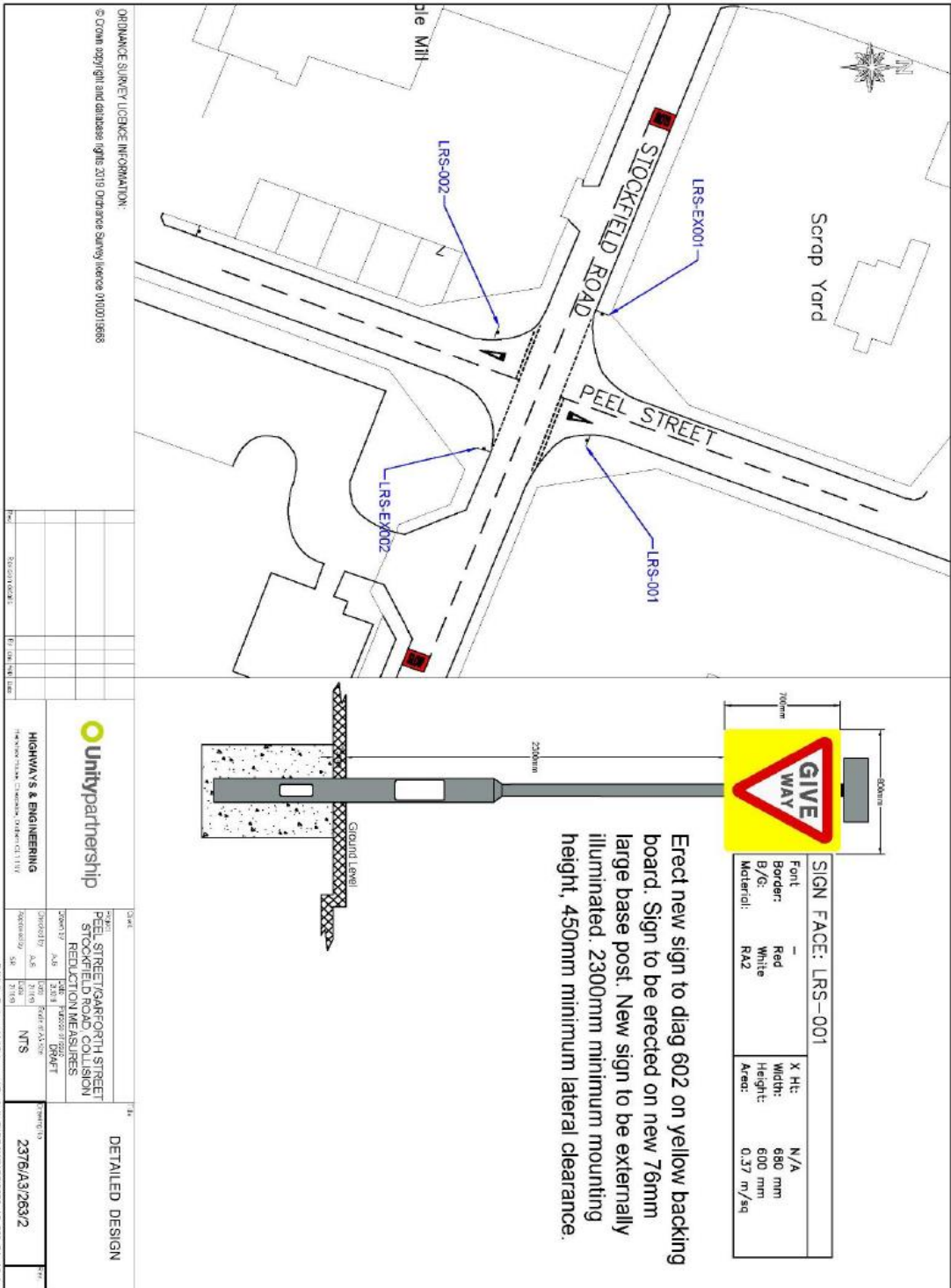
**Unity** partnership  
 HIGHWAYS & ENGINEERING  
 NATIONAL TRUCKS DESIGN CENTRE

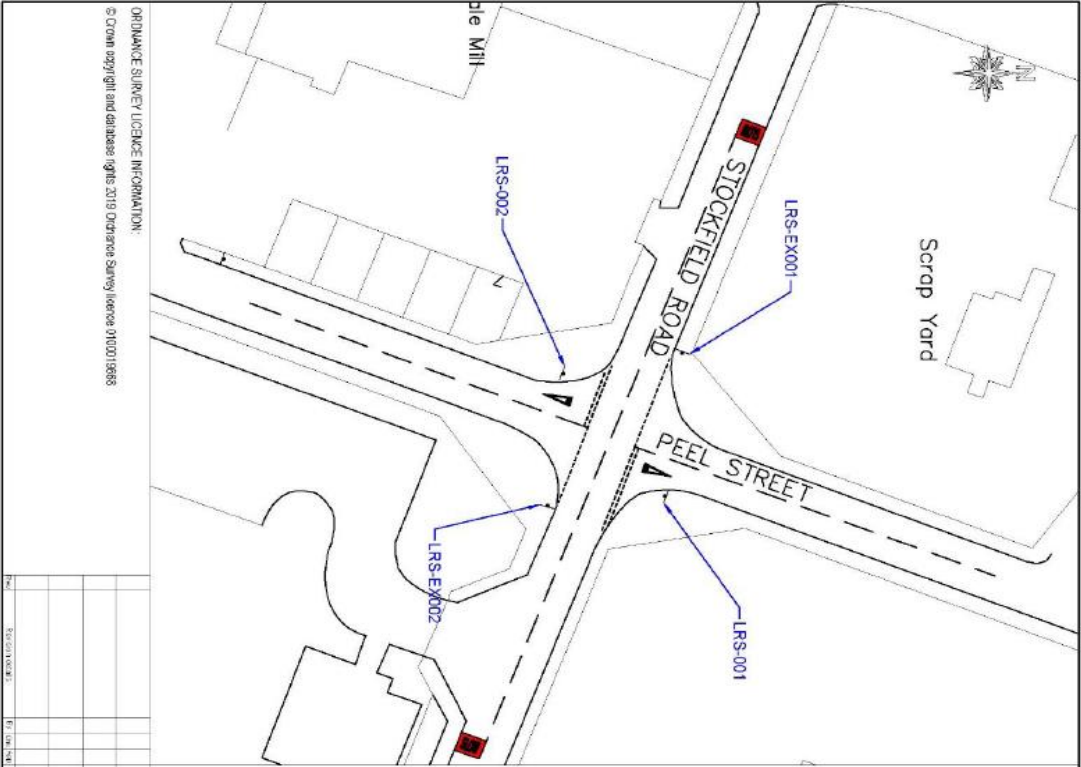
DATE	BY	DESCRIPTION

OLDHAM MEC  
 PEEL, STAGARPOETH ST,  
 STOCKFIELD STREET COLLISION  
 REDUCTION MEASURES  
 AND PROPOSED PARKING/  
 LOADING RESTRICTIONS.  
 23/6/13, 26/3/12

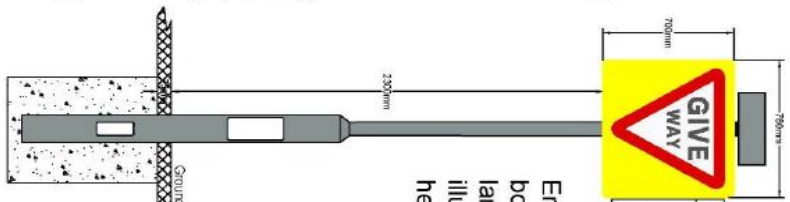








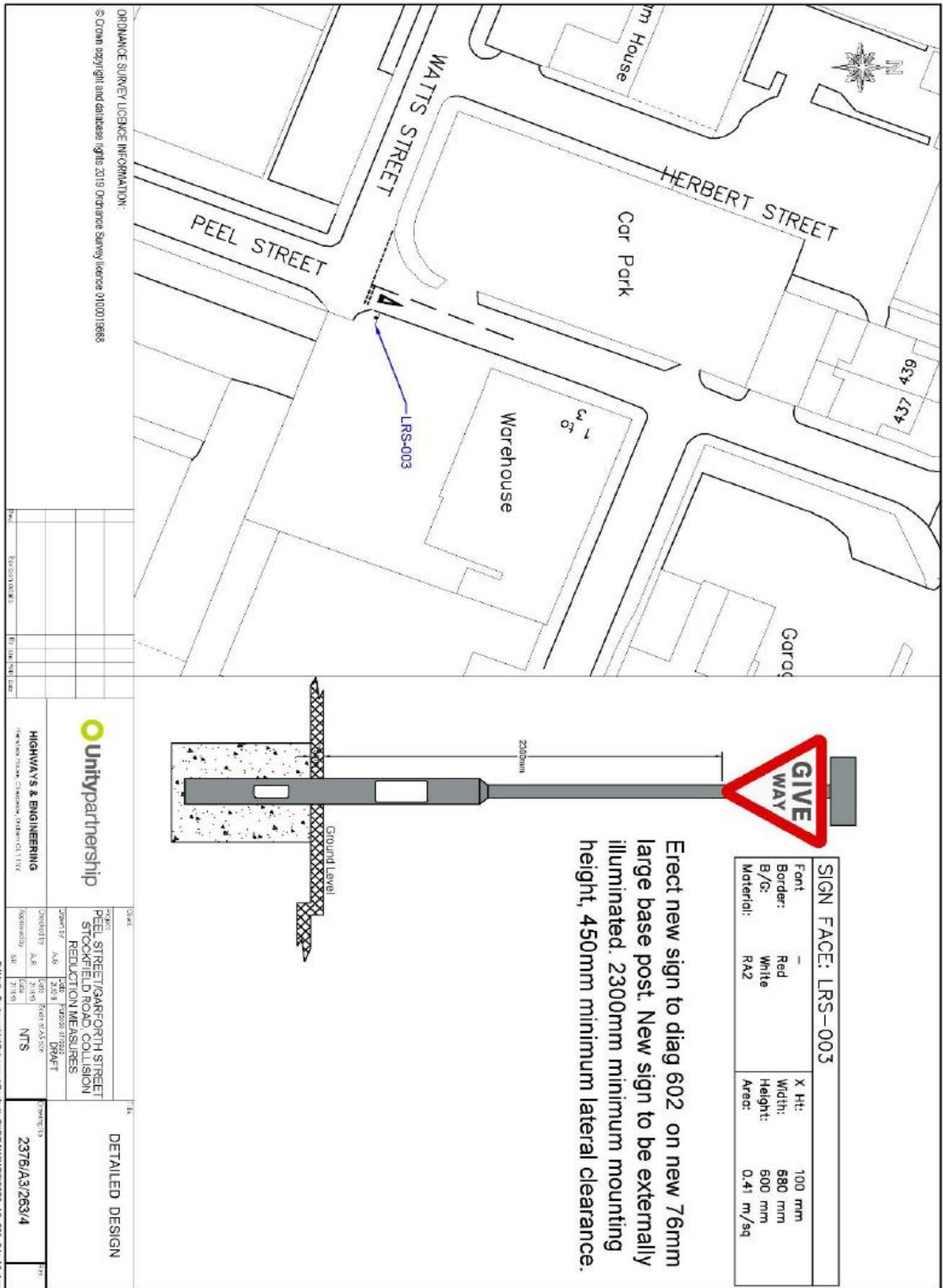
ORDNANCE SURVEY LICENCE INFORMATION:  
 © Crown copyright and database rights 2019 Ordnance Survey licence 0100019888



Erect new sign to diag 602 on yellow backing board. Sign to be erected on new 76mm large base post. New sign to be externally illuminated. 2300mm minimum mounting height, 450mm minimum lateral clearance.

SIGN FACE: LRS-002		X Ht:
Font	Red	100 mm
Border	White	680 mm
B/S:	RA2	600 mm
Material:		0.41 m <sup>2</sup> /sq

		<b>Highways &amp; Engineering</b> <small>Transportation, Planning, Operations</small>	<b>PEEL STREET/SAFORTH STREET STOCKFIELD ROAD COLLISION REDUCTION MEASURES</b>	<b>NTS</b> <small>Not To Scale</small>	<b>2376/A3/263/3</b>
<b>Unitypartnership</b>					
DATE	23/03/2023	PROJECT	PEEL STREET/SAFORTH STREET STOCKFIELD ROAD COLLISION REDUCTION MEASURES	SCALE	NTS
ISSUE	01	CLIENT	NTS	DATE	23/03/2023
PREPARED BY	[Name]	CHECKED BY	[Name]	APPROVED BY	[Name]
DRAWN BY	[Name]	DATE	23/03/2023	PROJECT NO.	2376/A3/263/3
D:\Unity Partnerships\Schemes\Carbam\Signs\TM3\1016\A3_263_2\10 TM3.dwg					





ORDNANCE SURVEY LICENSE INFORMATION:  
© Crown copyright and database right 2019 Ordnance Survey Licence 0100019888

Garage

MIDDLETON ROAD

Council Office

Garforth Street

War Meml

70

72

5

Sub E

Hoye

2

437

439

LRS-004

230mm

Ground level

SIGN FACE: LRS-004		X Ht:
Font:	Red	N/A
Border:	White	680 mm
B/Gs:	White	800 mm
Material:	RA2	0.41 m <sup>2</sup> /sq

SIGN FACE: LRS-004		X Ht:
Font:	White	80 mm
Border:	Blue	600 mm
B/Gs:	Blue	600 mm
Material:	RA2	0.36 m <sup>2</sup> /sq

Erect new signs to diag 602 and subplate on yellow backing board. Sign to be erected on new 76mm large base post. New sign to be externally illuminated. 2300mm minimum mounting height, 450mm minimum lateral clearance.

Unitypartnership

HIGHWAYS & ENGINEERING

PEEL STREET/GARFORTH STREET STOCKFIELD ROAD, COLLISION REDUCTION MEASURES

2376/A3/263/5

DETAILED DESIGN

DATE: 11/11/2019

PROJECT: PEEL STREET/GARFORTH STREET STOCKFIELD ROAD, COLLISION REDUCTION MEASURES

DESIGNED BY: A.S.

CHECKED BY: A.S.

DATE: 11/11/2019

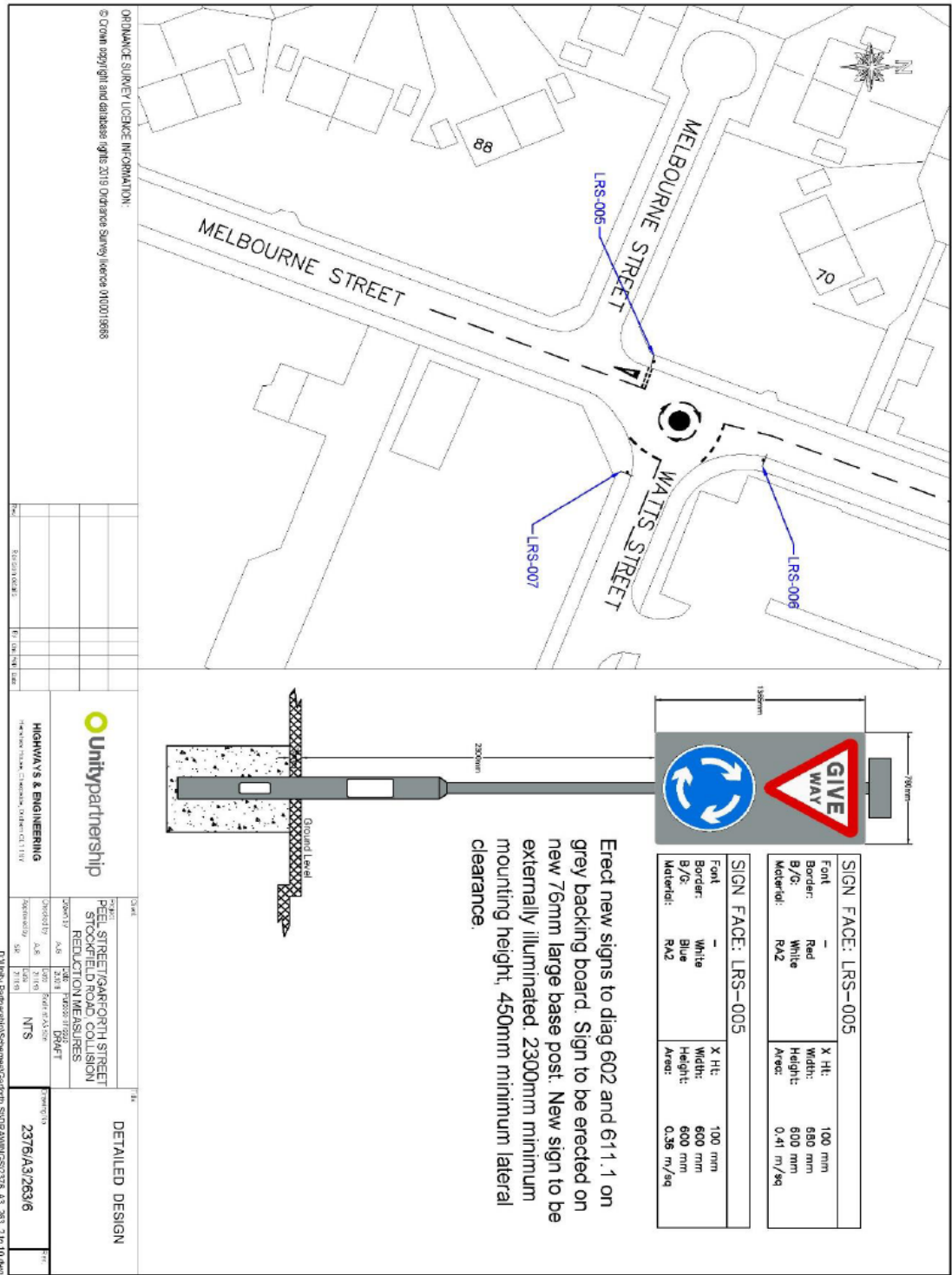
SCALE: 1:100

PROJECT NO: 2376/A3/263/5

DATE: 11/11/2019

PROJECT NO: 2376/A3/263/5

DATE: 11/11/2019



ORDNANCE SURVEY LICENSE INFORMATION:  
 © Crown copyright and database rights 2019 Ordnance Survey Licence 0100719868

**Unitypartnership**  
 HIGHWAYS & ENGINEERING

PEEL STREET / SAKAROPU STREET  
 STOCKFIELD ROAD COLLISION  
 REDUCED LANE DISPLACEMENTS  
 DRAFT

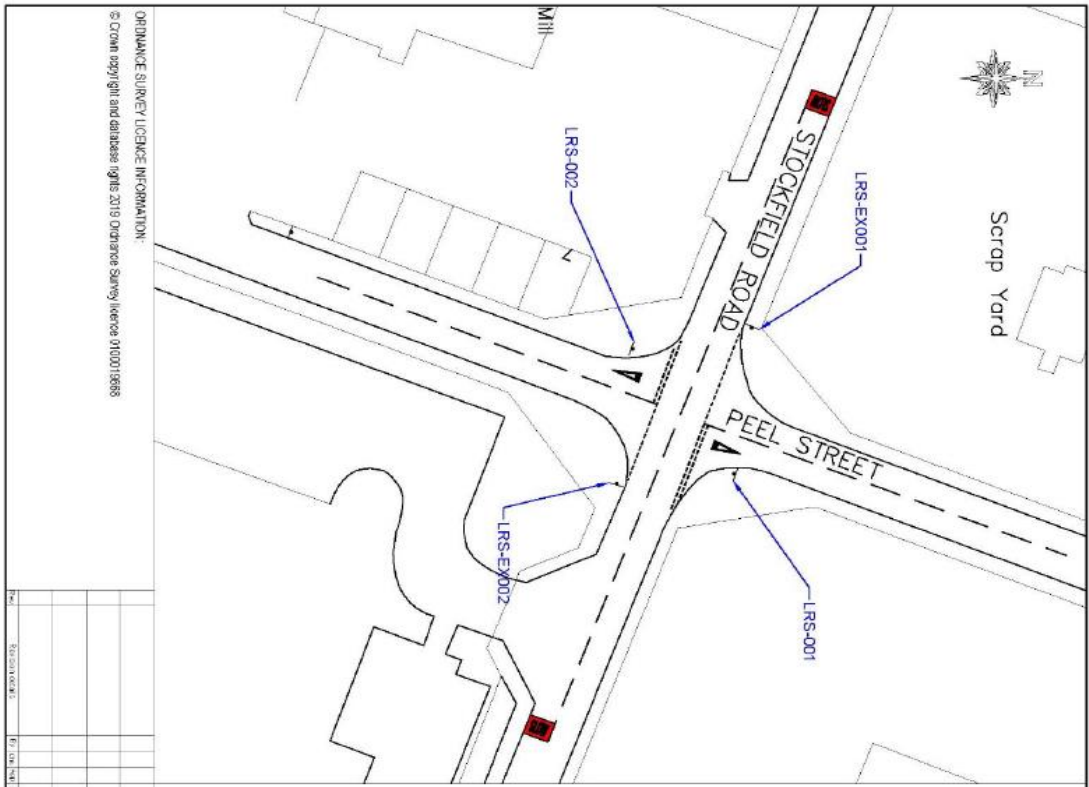
2376/AS/26316

21/11/19









ORDNANCE SURVEY LICENSE INFORMATION:  
 © Crown copyright and database rights 2019 Ordnance Survey (licence 0100019688)

		<b>HIGHWAYS &amp; ENGINEERING</b> <small>THE HIGHWAYS CONSULTANTS GROUP LIMITED</small>	
PROJECT PEEL STREET/ARPOSTU STREET STOCKFIELD ROAD COLLISION REDUCTION MEASURES	DATE 23/06/19	DRAWN BY ABE 3/16	CHECKED BY NTS 3/16
DRAFT	23/06/19	2376/A3/263/9	D:\Unity Partnerships\workspace\TM3\TM3\210 to 400



Disconnect and remove existing sign & post  
 LRS-EX001.



---

**APPENDIX A**  
**COLLISION DATA AND PLAN**

Page 25 of 32  
TM3/1016

g:\common\dec\_rec\3190

20.12.19

TM3/1016

g:\common\dec\_rec\pet\372

08.07.21

## Standard Report - Last 3 years to March 2019 - Peel Street area

This printout has been generated from the Greater Manchester Transportation Unit's (GMTU) database of road traffic accident records using the Unit's query system, GMAXI.

The road traffic accident database contains STATS19 data supplied by Greater Manchester Police and further validated by GMTU. It is maintained by GMTU on behalf of the ten District Councils in Greater Manchester.

**This information is provided for the sole use of the recipient. It may not be sold, lent, hired out, or in any other way disclosed to a third party nor may it be reproduced in any form which may be obtained by a third party.**

<b>Accident Reference Number:</b> Q2019493		<b>Day:</b> Sunday	<b>Contributory Factors</b>	<b>Date:</b> 01/05/2016	<b>Time</b> 13:45
<b>Place Reported:</b> Scene		<b>District:</b> Oldham	<b>Factor Cont Ref</b>	<b>Vehicle Details</b>	<b>Casualty Details</b>
<b>Location:</b> Middleton Road at Junction with Garforth Street				<b>Type Move From To Skid</b>	<b>Type Sex Age Sev Pupil</b>
<b>Description:</b> V2 (Pedal Cycle) Trav Nw Middleton Rd Towards Middleton And Collides With V1 Trav Sw Garforth St					
<b>Localational Details</b>		<b>Conditions</b>	<b>Accident Details</b>		
<b>Road:</b> A669/C	Junction Details: Xrds	Road Surface: Wet	Severity: Serious		
<b>OSGR:</b> 391021	Junction Control: GW	Light Conditions: Light	No. of Vehicles: 2		
<b>Speed Limit:</b> 30	Ped Crossing:	Weather Conditions: Rain	No. of Casualties: 1		
<b>Accident Reference Number:</b> Q2019482		<b>Day:</b> Monday	<b>Contributory Factors</b>	<b>Date:</b> 08/08/2016	<b>Time</b> 23:54
<b>Place Reported:</b> Scene		<b>District:</b> Oldham	<b>Factor Cont Ref</b>	<b>Vehicle Details</b>	<b>Casualty Details</b>
<b>Location:</b> Middleton Road at Junction with Peel Street				<b>Type Move From To Skid</b>	<b>Type Sex Age Sev Pupil</b>
<b>Description:</b> V1 Trav Nw Middleton Rd Going At Speed, V2 Trav Na Peel St Edging Out At Junction, Collision Occurs					
<b>Localational Details</b>		<b>Conditions</b>	<b>Accident Details</b>		
<b>Road:</b> A669/C	Junction Details: Xrds	Road Surface: Dry	Severity: Slight		
<b>OSGR:</b> 391017	Junction Control: GW	Light Conditions: Dark	No. of Vehicles: 2		
<b>Speed Limit:</b> 30	Ped Crossing:	Weather Conditions: Fine	No. of Casualties: 2		

<b>Accident Reference Number:</b> Q2021419										
<b>Place Reported:</b> Scene		<b>District:</b> Oldham		<b>Day:</b> Monday		<b>Contributory Factors</b>		<b>Date:</b> 12/09/2016		<b>Time:</b> 07:50
<b>Location:</b> Stockfield Road at junction with Peel Street										
<b>Description:</b> V2 Trav Nw Stockfield Rd And Is Hit On Nearside By V1 Trav Sa Peel St V1 Falls To Give Way At Junction										
<b>Road:</b> C/C		<b>Junction Details:</b> Xrds		<b>Road Surface:</b> Dry		<b>Severity:</b> Slight		<b>Accident Details</b>		
<b>OSGR:</b> 390930 405056		<b>Junction Control:</b> GW		<b>Light Conditions:</b> Light		<b>No. of Vehicles:</b> 2		<b>Severity:</b> Slight		
<b>Speed Limit:</b> 30		<b>Ped Crossing:</b>		<b>Weather Conditions:</b> Fine		<b>No. of Casualties:</b> 1		<b>Contributory Factors</b>		
<b>Accident Reference Number:</b> Q2022189										
<b>Place Reported:</b> Scene		<b>District:</b> Oldham		<b>Day:</b> Saturday		<b>Contributory Factors</b>		<b>Date:</b> 05/11/2016		<b>Time:</b> 00:59
<b>Location:</b> Middleton Road at junction with Milne Street										
<b>Description:</b> V1 Trav Sa On Middleton Rd And Collides With C1, Who Was Emerging From Driver's Nearside Crossing E-bound, C1 Receives Fatal Injury										
<b>Road:</b> A669/U		<b>Junction Details:</b> Turn		<b>Road Surface:</b> Wet		<b>Severity:</b> Fatal		<b>Accident Details</b>		
<b>OSGR:</b> 390924 405360		<b>Junction Control:</b> GW		<b>Light Conditions:</b> Dark		<b>No. of Vehicles:</b> 1		<b>Severity:</b> Fatal		
<b>Speed Limit:</b> 30		<b>Ped Crossing:</b>		<b>Weather Conditions:</b> Fine		<b>No. of Casualties:</b> 1		<b>Contributory Factors</b>		
<b>Accident Reference Number:</b> Q1026976										
<b>Place Reported:</b> Else		<b>District:</b> Oldham		<b>Day:</b> Monday		<b>Contributory Factors</b>		<b>Date:</b> 16/01/2017		<b>Time:</b> 18:45
<b>Location:</b> Middleton Road at junction with Garforth Street										
<b>Description:</b> V2 Trav Nw Middleton Rd, V1 Trav Sw Cornes Of Garforth St At Speed And Collides With V2.										
<b>Road:</b> A669/C		<b>Junction Details:</b> Xrds		<b>Road Surface:</b> Dry		<b>Severity:</b> Slight		<b>Accident Details</b>		
<b>OSGR:</b> 391021 405279		<b>Junction Control:</b> GW		<b>Light Conditions:</b> Day		<b>No. of Vehicles:</b> 2		<b>Severity:</b> Slight		
<b>Speed Limit:</b> 30		<b>Ped Crossing:</b>		<b>Weather Conditions:</b> Fine		<b>No. of Casualties:</b> 3		<b>Contributory Factors</b>		
<b>Accident Reference Number:</b> Q2026922										
<b>Place Reported:</b> Else		<b>District:</b> Oldham		<b>Day:</b> Sunday		<b>Contributory Factors</b>		<b>Date:</b> 12/02/2017		<b>Time:</b> 20:01
<b>Location:</b> Middleton Road 22 metres North West of Victoria Street										
<b>Description:</b> C1 Crossing S-bound on Zebra Crossing, Hit By V1 Trav Nw Middleton Rd										
<b>Road:</b> A669		<b>Junction Details:</b>		<b>Road Surface:</b> Wet		<b>Severity:</b> Serious		<b>Accident Details</b>		
<b>OSGR:</b> 390907 405324		<b>Junction Control:</b> n/a		<b>Light Conditions:</b> Dark		<b>No. of Vehicles:</b> 1		<b>Severity:</b> Serious		
<b>Speed Limit:</b> 30		<b>Ped Crossing:</b> Zebra		<b>Weather Conditions:</b> Wind		<b>No. of Casualties:</b> 1		<b>Contributory Factors</b>		



<b>Accident Reference Number:</b> Q2028233		<b>Day:</b> Saturday		<b>Contributory Factors</b>		<b>Date:</b> 18/03/2017		<b>Time:</b> 01:25	
<b>Place Reported:</b> Scene		<b>District:</b> Oldham		<b>Factor Conf Ref</b>		<b>Vehicle Details</b>		<b>Casualty Details</b>	
<b>Location:</b> Garforth Street 10 metres NE Of Middleton Road		<b>Description:</b> V2 Is Stationary On Garforth St. V1 Trav Sa Middleton Rd Turns Left Into Garforth St & Collides V2. V1 Falls To Stop. V2 Has Sore Leg		<b>DLoss VLike V1</b>		<b>Car TurnL NW NE</b>		<b>Type Sex Age Sev Pupil</b>	
<b>Localational Details</b>		<b>Conditions</b>		<b>Severity:</b>		<b>No. of Vehicles:</b> 2		<b>No. of Casualties:</b> 1	
Road: C/A689 Junction Details: Xrds		Road Surface: Wet		Severity: Slight		No. of Vehicles: 2		No. of Casualties: 1	
OSGR: 391024 405295 Junction Control: GW		Light Conditions: Dark							
Speed Limit: 20 Pad Crossing:		Weather Conditions: Fine							
<b>Accident Reference Number:</b> Q2030064		<b>Day:</b> Tuesday		<b>Contributory Factors</b>		<b>Date:</b> 28/03/2017		<b>Time:</b> 08:35	
<b>Place Reported:</b> Else		<b>District:</b> Oldham		<b>Factor Conf Ref</b>		<b>Vehicle Details</b>		<b>Casualty Details</b>	
<b>Location:</b> Peal Street at Junction with Stockfield Road		<b>Description:</b> V2 (Motorcycle) Trav Ne Peal St. V2 Slows Approaching Junction. But Is Hit By V1 Trav Se Stockfield Rd Who Fails to Give Way		<b>m/s Alpha SW NE</b>		<b>1 Rld M 29 Slight</b>			
<b>Localational Details</b>		<b>Conditions</b>		<b>Severity:</b>		<b>No. of Vehicles:</b> 2		<b>No. of Casualties:</b> 1	
Road: C/C Junction Details: Xrds		Road Surface: Dry		Severity: Slight		No. of Vehicles: 2		No. of Casualties: 1	
OSGR: 390930 405056 Junction Control: GW		Light Conditions: Light							
Speed Limit: 30 Pad Crossing:		Weather Conditions: Fine							
<b>Accident Reference Number:</b> Q2031500		<b>Day:</b> Saturday		<b>Contributory Factors</b>		<b>Date:</b> 20/05/2017		<b>Time:</b> 12:00	
<b>Place Reported:</b> Else		<b>District:</b> Oldham		<b>Factor Conf Ref</b>		<b>Vehicle Details</b>		<b>Casualty Details</b>	
<b>Location:</b> Landsdowne Road at Junction with Arkwright Street		<b>Description:</b> V2 Trav N Landsdowne Rd Towards Middleton Rd. V1 Trav W Arkwright St At Speed And Collision Occurs.		<b>Car Alpha E W</b>		<b>1 Drv F 70 Slight</b>			
<b>Localational Details</b>		<b>Conditions</b>		<b>Severity:</b>		<b>No. of Vehicles:</b> 2		<b>No. of Casualties:</b> 1	
Road: B6190/U Junction Details: Xrds		Road Surface: Wet		Severity: Slight		No. of Vehicles: 2		No. of Casualties: 1	
OSGR: 391164 404963 Junction Control: GW		Light Conditions: Light							
Speed Limit: 30 Pad Crossing:		Weather Conditions: Rain							
<b>Accident Reference Number:</b> Q2032169		<b>Day:</b> Thursday		<b>Contributory Factors</b>		<b>Date:</b> 29/05/2017		<b>Time:</b> 07:30	
<b>Place Reported:</b> Else		<b>District:</b> Oldham		<b>Factor Conf Ref</b>		<b>Vehicle Details</b>		<b>Casualty Details</b>	
<b>Location:</b> Middleton Road at Junction with Garforth Street		<b>Description:</b> V2 (Motorcycle) Trav Sa Middleton Rd On Nearside Traffic. Turning Right. V1 Trav Ne Peal St Onto Garforth St And Collision Occurs With V2		<b>DFluo Poss V1</b>		<b>Car Start SW NE</b>		<b>1 Rld M 24 Serious</b>	
<b>Localational Details</b>		<b>Conditions</b>		<b>Severity:</b>		<b>No. of Vehicles:</b> 2		<b>No. of Casualties:</b> 1	
Road: A689/C Junction Details: Xrds		Road Surface: Wet		Severity: Serious		No. of Vehicles: 2		No. of Casualties: 1	
OSGR: 391018 405282 Junction Control: GW		Light Conditions: Light							
Speed Limit: 30 Pad Crossing:		Weather Conditions: Rain							

<b>Accident Reference Number:</b> Q2032812		<b>Day:</b> Wednesday		<b>Contributory Factors</b>		<b>Date:</b> 12/07/2017		<b>Time:</b> 15:30	
<b>Place Reported:</b> Else		<b>District:</b> Oldham		<b>Factor Cont Ref</b>		<b>Vehicle Details</b>		<b>Casualty Details</b>	
<b>Location:</b> Middleton Road at Junction with Milne Street		<b>Description:</b> Both Vets Trav Sa Middleton Rd V2 Stationary At Junction Waiting For Traffic To Clear V1 Collides Into Rear Of V2		<b>Type</b>		<b>From To</b>		<b>Skid</b>	
<b>Localational Details</b>		<b>Conditions</b>		<b>Severity:</b>		<b>No. of Vehicles:</b>		<b>No. of Casualties:</b>	
Road:	A689 U	Junction Details:	TJn	Road Surface:	Dry	Severity:	Slight	No. of Vehicles:	2
OSGR:	390828	Junction Control:	GW	Light Conditions:	Light	No. of Casualties:	1		
Speed Limit:	30	Ped Crossing:		Weather Conditions:	Fine				
<b>Accident Reference Number:</b> Q1035870		<b>Day:</b> Thursday		<b>Contributory Factors</b>		<b>Date:</b> 28/09/2017		<b>Time:</b> 16:50	
<b>Place Reported:</b> Else		<b>District:</b> Oldham		<b>Factor Cont Ref</b>		<b>Vehicle Details</b>		<b>Casualty Details</b>	
<b>Location:</b> Middleton Road at Junction with Lansdowne Road		<b>Description:</b> Both Vets Trav Nw Middleton Rd V2 (Peda) Cycle) Moves Off At Green Als Going Straight V1 Passes V2 Then Turns Left Into Lansdowne Rd Colliding With V2 V1 FTS		<b>Type</b>		<b>From To</b>		<b>Skid</b>	
<b>Localational Details</b>		<b>Conditions</b>		<b>Severity:</b>		<b>No. of Vehicles:</b>		<b>No. of Casualties:</b>	
Road:	A689/B5190	Junction Details:	TJn	Road Surface:	Dry	Severity:	Slight	No. of Vehicles:	2
OSGR:	391211	Junction Control:	TS	Light Conditions:	Light	No. of Casualties:	1		
Speed Limit:	30	Ped Crossing:	Ref	Weather Conditions:	Fine				
<b>Accident Reference Number:</b> Q2039227		<b>Day:</b> Tuesday		<b>Contributory Factors</b>		<b>Date:</b> 17/10/2017		<b>Time:</b> 16:40	
<b>Place Reported:</b> Scene		<b>District:</b> Oldham		<b>Factor Cont Ref</b>		<b>Vehicle Details</b>		<b>Casualty Details</b>	
<b>Location:</b> Stockfield Road at Junction with Peal Street		<b>Description:</b> V1 Trav Sa Stockfield Rd C1 Crosses Stockfield Rd S-bound Behind Stationary Vehicle, Sees V1 Runs In Front Of V1 - They Collide		<b>Type</b>		<b>From To</b>		<b>Skid</b>	
<b>Localational Details</b>		<b>Conditions</b>		<b>Severity:</b>		<b>No. of Vehicles:</b>		<b>No. of Casualties:</b>	
Road:	C/C	Junction Details:	Xrds	Road Surface:	Dry	Severity:	Slight	No. of Vehicles:	1
OSGR:	390937	Junction Control:	GW	Light Conditions:	Light	No. of Casualties:	1		
Speed Limit:	30	Ped Crossing:		Weather Conditions:	Fine				
<b>Accident Reference Number:</b> Q2037349		<b>Day:</b> Wednesday		<b>Contributory Factors</b>		<b>Date:</b> 22/11/2017		<b>Time:</b> 14:50	
<b>Place Reported:</b> Scene		<b>District:</b> Oldham		<b>Factor Cont Ref</b>		<b>Vehicle Details</b>		<b>Casualty Details</b>	
<b>Location:</b> Peal Street at Junction with Stockfield Road		<b>Description:</b> V1 Trav Sa Stockfield Rd V2 Trav Sw Peal St V1 Falls To Give Way At Jct And Collides With V2 Which Then Collides With Wall		<b>Type</b>		<b>From To</b>		<b>Skid</b>	
<b>Localational Details</b>		<b>Conditions</b>		<b>Severity:</b>		<b>No. of Vehicles:</b>		<b>No. of Casualties:</b>	
Road:	C/C	Junction Details:	Xrds	Road Surface:	Dry	Severity:	Slight	No. of Vehicles:	2
OSGR:	390934	Junction Control:	GW	Light Conditions:	Light	No. of Casualties:	1		
Speed Limit:	30	Ped Crossing:		Weather Conditions:	Fine				

<b>Accident Reference Number:</b> Q2038187		<b>Day:</b> Monday		<b>Date:</b> 04/12/2017		<b>Time:</b> 08:40																																													
<b>Place Reported:</b> Scane		<b>District:</b> Oldham		<b>Contributory Factors</b>		<b>Casualty Details</b>																																													
<b>Location:</b> Peal Street at junction with Stockfield Road		<b>Description:</b> Both Vans Trav Sw Peal St V2 Turns Left Into Stockfield Rd & Forcing V1 (Pedal Cycle) To Ride Onto The Kerb To Avoid Collision But Rider Fall To Ground		<table border="1"> <thead> <tr> <th>Factor</th> <th>Cont</th> <th>Ref</th> <th>Vehicle Move</th> <th>From To</th> <th>Skid</th> <th>Type</th> <th>Sex</th> <th>Age</th> <th>Sev</th> <th>Pupl</th> </tr> </thead> <tbody> <tr> <td>DTurn</td> <td>Pos</td> <td>V2</td> <td>p/c</td> <td>Ahea</td> <td>NE SW</td> <td>1</td> <td>Rid</td> <td>M</td> <td>35</td> <td>Slight</td> </tr> <tr> <td>DFluo</td> <td>Vlike</td> <td>V2</td> <td>Car</td> <td>TurnL</td> <td>NE SE</td> <td></td> <td></td> <td></td> <td></td> <td></td> </tr> </tbody> </table>		Factor	Cont	Ref	Vehicle Move	From To	Skid	Type	Sex	Age	Sev	Pupl	DTurn	Pos	V2	p/c	Ahea	NE SW	1	Rid	M	35	Slight	DFluo	Vlike	V2	Car	TurnL	NE SE																		
Factor	Cont	Ref	Vehicle Move	From To	Skid	Type	Sex	Age	Sev	Pupl																																									
DTurn	Pos	V2	p/c	Ahea	NE SW	1	Rid	M	35	Slight																																									
DFluo	Vlike	V2	Car	TurnL	NE SE																																														
<b>Road:</b> C/C		<b>Junction Details:</b> Xrds		<b>Road Surface:</b> Wet		<b>Severity:</b> Slight																																													
<b>OSGR:</b> 390937 405059		<b>Junction Control:</b> GW		<b>Light Conditions:</b> Light		<b>No. of Vehicles:</b> 2																																													
<b>Speed Limit:</b> 30		<b>Pad Crossing:</b> Ref		<b>Weather Conditions:</b> Rain		<b>No. of Casualties:</b> 1																																													
<b>Accident Reference Number:</b> Q2041011		<b>Day:</b> Wednesday		<b>Date:</b> 21/02/2018		<b>Time:</b> 16:50																																													
<b>Place Reported:</b> Scane		<b>District:</b> Oldham		<b>Contributory Factors</b>		<b>Casualty Details</b>																																													
<b>Location:</b> Cobden Street at junction with Waits Street		<b>Description:</b> V1 Trav Sw On Waits St Turns Right & Collides With V2 Trav Ne On Cobden St Waiting To Turn Left. V1 Fts.		<table border="1"> <thead> <tr> <th>Factor</th> <th>Cont</th> <th>Ref</th> <th>Vehicle Move</th> <th>From To</th> <th>Skid</th> <th>Type</th> <th>Sex</th> <th>Age</th> <th>Sev</th> <th>Pupl</th> </tr> </thead> <tbody> <tr> <td>DFast</td> <td>Vlike</td> <td>V1</td> <td>Car</td> <td>TurnR</td> <td>NW SW</td> <td></td> <td></td> <td></td> <td></td> <td></td> </tr> <tr> <td>DTurn</td> <td>Vlike</td> <td>V1</td> <td>Car</td> <td>wgTL</td> <td>SW NW</td> <td>1</td> <td>Drv</td> <td>M</td> <td>55</td> <td>Slight</td> </tr> </tbody> </table>		Factor	Cont	Ref	Vehicle Move	From To	Skid	Type	Sex	Age	Sev	Pupl	DFast	Vlike	V1	Car	TurnR	NW SW						DTurn	Vlike	V1	Car	wgTL	SW NW	1	Drv	M	55	Slight													
Factor	Cont	Ref	Vehicle Move	From To	Skid	Type	Sex	Age	Sev	Pupl																																									
DFast	Vlike	V1	Car	TurnR	NW SW																																														
DTurn	Vlike	V1	Car	wgTL	SW NW	1	Drv	M	55	Slight																																									
<b>Road:</b> U/U		<b>Junction Details:</b> Xrds		<b>Road Surface:</b> Dry		<b>Severity:</b> Slight																																													
<b>OSGR:</b> 390841 405236		<b>Junction Control:</b> GW		<b>Light Conditions:</b> Light		<b>No. of Vehicles:</b> 2																																													
<b>Speed Limit:</b> 30		<b>Pad Crossing:</b>		<b>Weather Conditions:</b> Fine		<b>No. of Casualties:</b> 1																																													
<b>Accident Reference Number:</b> Q2041389		<b>Day:</b> Saturday		<b>Date:</b> 10/03/2018		<b>Time:</b> 19:27																																													
<b>Place Reported:</b> Scane		<b>District:</b> Oldham		<b>Contributory Factors</b>		<b>Casualty Details</b>																																													
<b>Location:</b> Middleton Road at junction with Peal Street		<b>Description:</b> V2 Trav Ne Peal St Turns Left Onto Middleton Rd & Collides With V1 Trav Sw Middleton Rd On Wrong Side of Rd Oaking Moving Van On Its Offside.		<table border="1"> <thead> <tr> <th>Factor</th> <th>Cont</th> <th>Ref</th> <th>Vehicle Move</th> <th>From To</th> <th>Skid</th> <th>Type</th> <th>Sex</th> <th>Age</th> <th>Sev</th> <th>Pupl</th> </tr> </thead> <tbody> <tr> <td>DTurn</td> <td>Vlike</td> <td>V1</td> <td>Car</td> <td>ORTg</td> <td>NW SE</td> <td>1</td> <td>Pas</td> <td>F</td> <td>28</td> <td>Slight</td> </tr> <tr> <td>DCare</td> <td>Vlike</td> <td>V1</td> <td>Car</td> <td>TurnL</td> <td>SW NW</td> <td></td> <td></td> <td></td> <td></td> <td></td> </tr> <tr> <td>Dludg</td> <td>Vlike</td> <td>V1</td> <td></td> <td></td> <td></td> <td></td> <td></td> <td></td> <td></td> <td></td> </tr> </tbody> </table>		Factor	Cont	Ref	Vehicle Move	From To	Skid	Type	Sex	Age	Sev	Pupl	DTurn	Vlike	V1	Car	ORTg	NW SE	1	Pas	F	28	Slight	DCare	Vlike	V1	Car	TurnL	SW NW						Dludg	Vlike	V1										
Factor	Cont	Ref	Vehicle Move	From To	Skid	Type	Sex	Age	Sev	Pupl																																									
DTurn	Vlike	V1	Car	ORTg	NW SE	1	Pas	F	28	Slight																																									
DCare	Vlike	V1	Car	TurnL	SW NW																																														
Dludg	Vlike	V1																																																	
<b>Road:</b> A669/C		<b>Junction Details:</b> Xrds		<b>Road Surface:</b> Wet		<b>Severity:</b> Slight																																													
<b>OSGR:</b> 391014 405283		<b>Junction Control:</b> GW		<b>Light Conditions:</b> Dark		<b>No. of Vehicles:</b> 2																																													
<b>Speed Limit:</b> 30		<b>Pad Crossing:</b>		<b>Weather Conditions:</b> Fine		<b>No. of Casualties:</b> 1																																													
<b>Accident Reference Number:</b> Q2041638		<b>Day:</b> Thursday		<b>Date:</b> 15/03/2018		<b>Time:</b> 02:25																																													
<b>Place Reported:</b> Else		<b>District:</b> Oldham		<b>Contributory Factors</b>		<b>Casualty Details</b>																																													
<b>Location:</b> Peal Street 55metres South West of Stockfield Road		<b>Description:</b> C1 On N/S Piment On Peal St. C1 Ran Up Middle Of Road And Jumped Out Of Way Of Oncoming Vans, Both Trav Sw Peal St, Causing Himself Injury.		<table border="1"> <thead> <tr> <th>Factor</th> <th>Cont</th> <th>Ref</th> <th>Vehicle Move</th> <th>From To</th> <th>Skid</th> <th>Type</th> <th>Sex</th> <th>Age</th> <th>Sev</th> <th>Pupl</th> </tr> </thead> <tbody> <tr> <td></td> <td></td> <td></td> <td>Car</td> <td>Ahea</td> <td>NE SW</td> <td>1</td> <td>Pad</td> <td>M</td> <td>33</td> <td>Slight</td> </tr> <tr> <td></td> <td></td> <td></td> <td>Car</td> <td>Ahea</td> <td>NE SW</td> <td></td> <td></td> <td></td> <td></td> <td></td> </tr> </tbody> </table>		Factor	Cont	Ref	Vehicle Move	From To	Skid	Type	Sex	Age	Sev	Pupl				Car	Ahea	NE SW	1	Pad	M	33	Slight				Car	Ahea	NE SW																		
Factor	Cont	Ref	Vehicle Move	From To	Skid	Type	Sex	Age	Sev	Pupl																																									
			Car	Ahea	NE SW	1	Pad	M	33	Slight																																									
			Car	Ahea	NE SW																																														
<b>Road:</b> C		<b>Junction Details:</b>		<b>Road Surface:</b> Dry		<b>Severity:</b> Slight																																													
<b>OSGR:</b> 39010 404999		<b>Junction Control:</b> n/a		<b>Light Conditions:</b> Dark		<b>No. of Vehicles:</b> 2																																													
<b>Speed Limit:</b> 30		<b>Pad Crossing:</b>		<b>Weather Conditions:</b> Fine		<b>No. of Casualties:</b> 1																																													

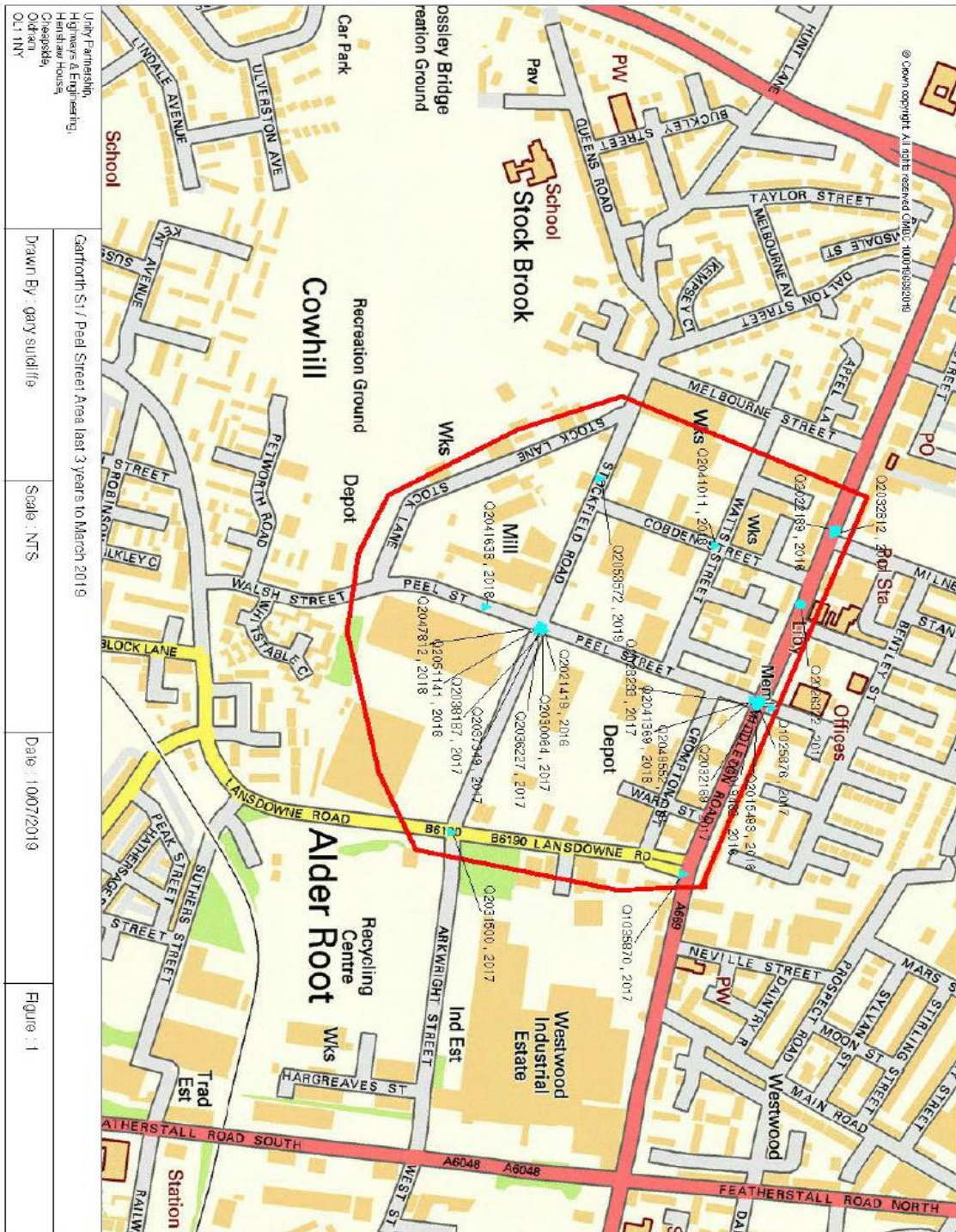


**Accident Reference Number:** Q2047812 **Day:** Tuesday **Date:** 28/08/2018 **Time:** 00:05  
**Place Reported:** Scene **District:** Oldham  
**Location:** Peel Street at junction with Stockfield Road **Factor Conf Ref** **Vehicle Details** **Casualty Details**  
**Description:** V2 Trav SW Peel St. V1 Trav SE Stockfield Rd Falls To Give Way At Jct & Collides With V2 Front Ns **DJUDG** **VLKw** **V1** **Type Move From To Skid** **Type Sex Age Sev Pupil**  
**Local Details** **Conditions** **Accident Details**  
**Road:** C/C **Junction Details:** Xrds **Road Surface:** Dry **Severity:** Slight  
**OSGR:** 390933 **Junction Control:** GW **Light Conditions:** Dark **No. of Vehicles:** 2  
**Speed Limit:** 30 **Ped Crossing:** **Weather Conditions:** Fine **No. of Casualties:** 1

**Accident Reference Number:** Q2049592 **Day:** Saturday **Date:** 22/09/2018 **Time:** 13:30  
**Place Reported:** Else **District:** Oldham  
**Location:** Peel Street 5 metres SW Of Middleton Road **Factor Conf Ref** **Vehicle Details** **Casualty Details**  
**Description:** Both Vans Trav NE Peel St. V2 (Taxi) Waits To Go Straight Ahead On Garforth St. V1 Trav Behind V2 Falls To Stop & Collides With Rear Of V2. V1 FTS **Car** **Alhea** **SW** **NE** **Type Move From To Skid** **Type Sex Age Sev Pupil**  
**Local Details** **Conditions** **Accident Details**  
**Road:** C/A689 **Junction Details:** Xrds **Road Surface:** Dry **Severity:** Slight  
**OSGR:** 391015 **Junction Control:** GW **Light Conditions:** Light **No. of Vehicles:** 2  
**Speed Limit:** 30 **Ped Crossing:** **Weather Conditions:** Fine **No. of Casualties:** 1

**Accident Reference Number:** Q2051141 **Day:** Thursday **Date:** 08/12/2018 **Time:** 08:30  
**Place Reported:** Else **District:** Oldham  
**Location:** Peel Street at junction with Stockfield Road **Factor Conf Ref** **Vehicle Details** **Casualty Details**  
**Description:** V2 Trav NE Peel St When V1 (Taxi) Trav SE Stockfield Rd. Collision Occurs. V1 FTS **DJUDV** **Poss** **V1** **Type Move From To Skid** **Type Sex Age Sev Pupil**  
**Local Details** **Conditions** **Accident Details**  
**Road:** C/C **Junction Details:** Xrds **Road Surface:** Wet **Severity:** Slight  
**OSGR:** 390931 **Junction Control:** GW **Light Conditions:** Light **No. of Vehicles:** 2  
**Speed Limit:** 30 **Ped Crossing:** **Weather Conditions:** Rain **No. of Casualties:** 1

**Accident Reference Number:** Q2053572 **Day:** Tuesday **Date:** 12/02/2019 **Time:** 15:25  
**Place Reported:** Scene **District:** Oldham  
**Location:** Stockfield Road 25 metres NW Of Cobden Street **Factor Conf Ref** **Vehicle Details** **Casualty Details**  
**Description:** V1 Trav SW Cobden St From Middleton Rd. Then Turns Right Onto Stockfield Rd Heading NW & Colls C1 (Child Pedestrian) Crosses Stockfield Rd Dir Unknown. V1 FTS **Car** **Alhea** **SE** **NW** **Type Move From To Skid** **Type Sex Age Sev Pupil**  
**Local Details** **Conditions** **Accident Details**  
**Road:** C **Junction Details:** **Road Surface:** Dry **Severity:** Slight  
**OSGR:** 390765 **Junction Control:** n/a **Light Conditions:** Light **No. of Vehicles:** 1  
**Speed Limit:** 30 **Ped Crossing:** **Weather Conditions:** Fine **No. of Casualties:** 1



---

**APPENDIX B**  
**COPY OF OBJECTIONS**

---

Environment Group Solicitor to the Council,  
Oldham Council,  
Civic Centre,  
West Street,  
Oldham,  
OL1 1UL

28<sup>th</sup> July 2020

**OLDHAM CHADDERTON AREA CONSOLIDATION ORDER (Order LJM/TO20/22)**

Dear Sir/Madam

I am writing on behalf of the [REDACTED] [REDACTED] Middleton Road, Chadderton (OL9 9LX) in response to the Consultation Period for the Oldham Chadderton Area Consolidation Order (Order LJM/TO20/22).

In general, [REDACTED] are supportive of any proposals that will improve the safe operation of the Middleton Road/Peel Street/Garforth Street junction given that there have been 4 instances in the last 18 months where a vehicle has struck the boundary wall of site. However, [REDACTED] do have concerns regarding the impact of the proposed TRO's on Peel Street will have on the operation of the site.

The proposed TRO in the vicinity of [REDACTED] will replace the existing No Loading Restrictions between 0730-0930 and 16.30-1830 on Peel Street with No Waiting or Loading Anytime restrictions. Although the [REDACTED] try to plan deliveries outside of the peak periods, the introduction of these restrictions will materially impact on the [REDACTED] operation.

There is currently a requirement for vehicles to park on this section of Peel Street [REDACTED] [REDACTED], this servicing cannot be undertaken elsewhere on the surrounding highway network due to the nature of deliveries/collections.



---

Based on this, it is requested that to enable servicing to be undertaken on Peel Street that the existing TRO located on the western side of the Peel Street carriageway (along the eastern edge of the site boundary) be retained as existing or actually removed. The section of carriageway in question covers a distance of approximately 30 metres.

It is felt that the introduction of the Prohibition of Driving Order on Peel Street for vehicles travelling in south-westerly direction will substantially reduce vehicle movements on this section of Peel Street. Therefore, if vehicles associated with the [REDACTED] were to be parked on this section of Peel Street it would not prevent vehicles from travelling to the Middleton Road junction.

It should be noted that this section of Peel Street is also used as the point where [REDACTED] [REDACTED]. However, given these are vehicles associated [REDACTED] these are covered within the standard exemption contained within the TRO.

I trust this provides sufficient information and I look forward to hearing from you very soon. If in the meantime you require any further information, then please contact me directly.

Yours faithfully,

---

07 July 2020

**The Environment Group Solicitor to the Council  
Civic Centre  
West Street  
Oldham  
OL1 1UL**

Dear Sirs,

**RE: THE OLDHAM CHADDERTON AREA CONSOLIDATION ORDER PROHIBITION OF WAITING & LOADING AMENDMENT ORDER 2020 & PEEL STREET PROHIBITION OF DRIVING.**

I write with reference to the above named traffic proposal. Whilst I have no objections to the prohibition of waiting and loading proposals, I feel that the closure of Peel Street at the junction with Middleton Road will have a very detrimental effect on our business so I must object to this part of the proposal. We strongly rely on this route to enable passing customers to find our business from our directional sign at this junction. The whole of the industrial area here in Chadderton relies on Peel Street as the main artery route so closing it will effect many businesses.

I understand from Alister Storey that the proposal has come about due to the high number of injury collisions at the junction, one of the highest in the Borough over the last 5 years. I would imagine that most of these accidents are caused by drivers trying to shoot across the junction from Garforth Street to Peel Street or visa versa. I suggest a better option would be to close the junction on the residential Garforth Street side where traffic can be routed down Bentley Street onto Victoria Street to enter Middleton Road safely. Alternatively, I would be open to the installation of traffic lights as an option.

Our business is effectively hidden from passing traffic and therefore relies heavily on customers finding us easily from Middleton Road down Peel Street. As a business that didn't qualify for a single penny of support during our 9 weeks of closure due to the COVID-19 lockdown, losing in excess of [REDACTED] in sales, we need passing customers now more than ever for our survival.

Your serious consideration to my objection would be much appreciated.

Yours sincerely